



Gateway to European Rail Infrastructure

Rail Net Europe

**Reflections on the RNE Customer Survey and
corresponding RNE Activities
Part II - Information Technology**
Harald Reisinger RNE CIO

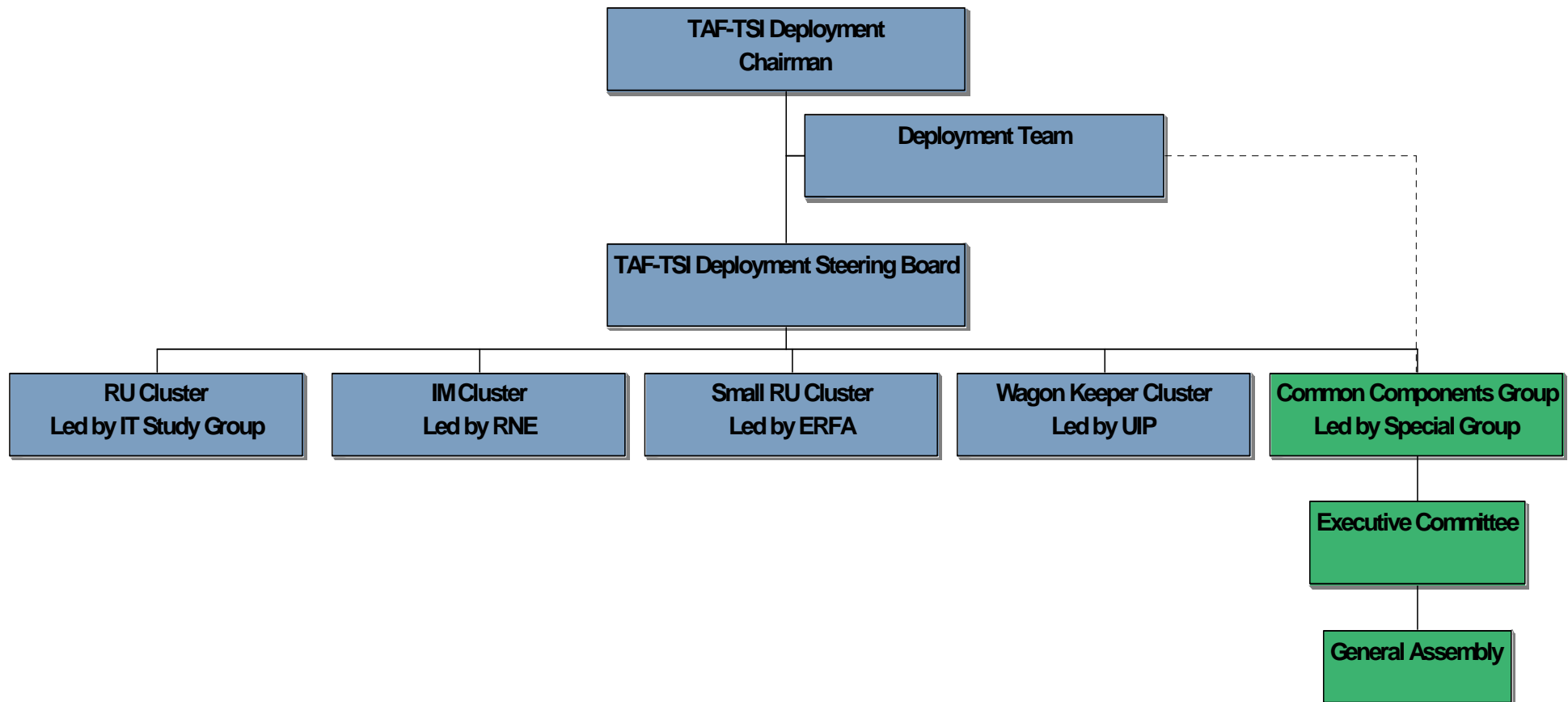
Customer Demand

- Customers expect the procedures regarding international Timetabling and Operations to be set up in line with TAF TSI
- TAF TSI is a legal requirement to be fulfilled by **IMs** and their **customers**
- Develop IT solutions to support the business based on Customer Needs, European Regulation (TAF/TAP TSI) and Today Business

Activities

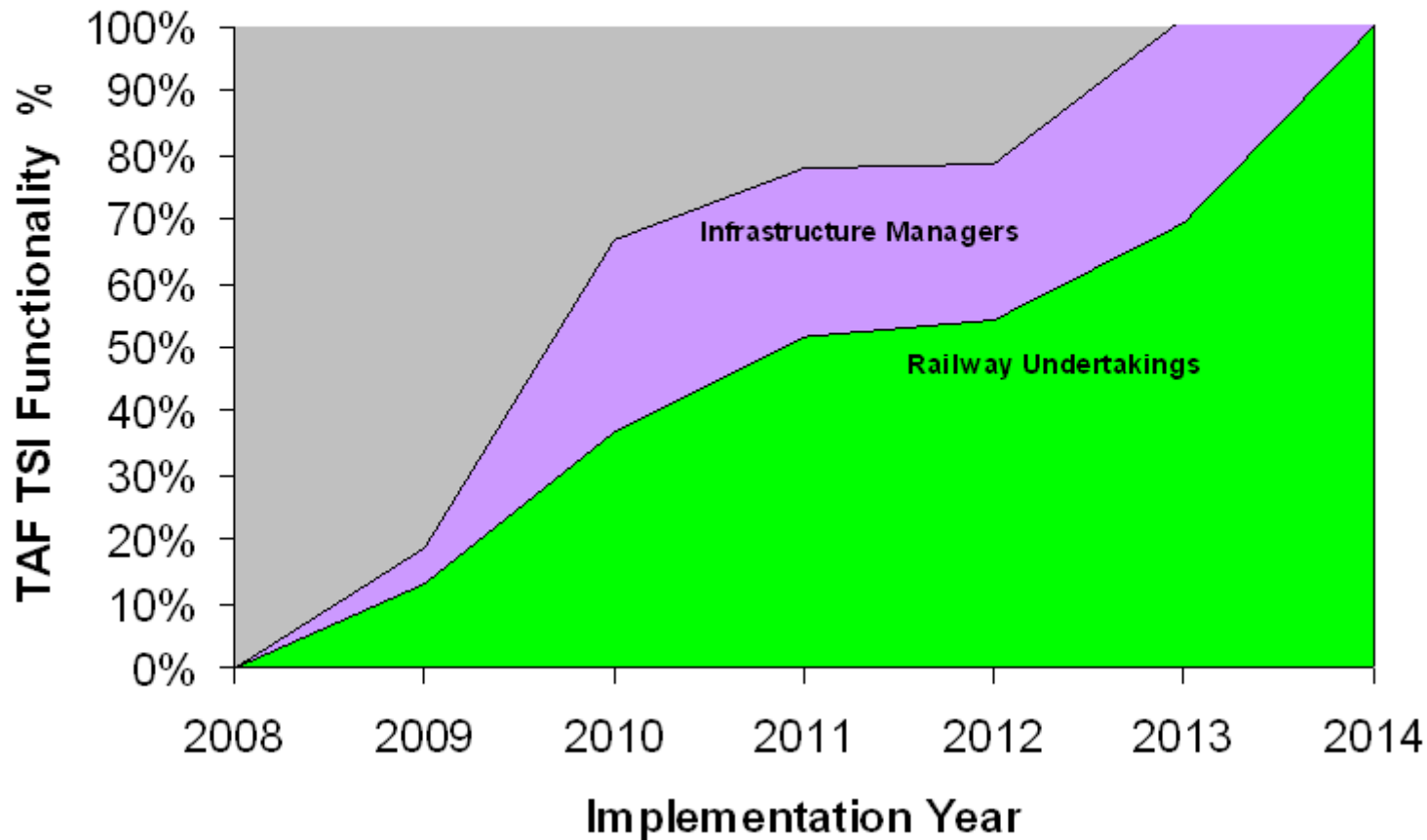
-
-
-

TAF TSI Governance - Organisation

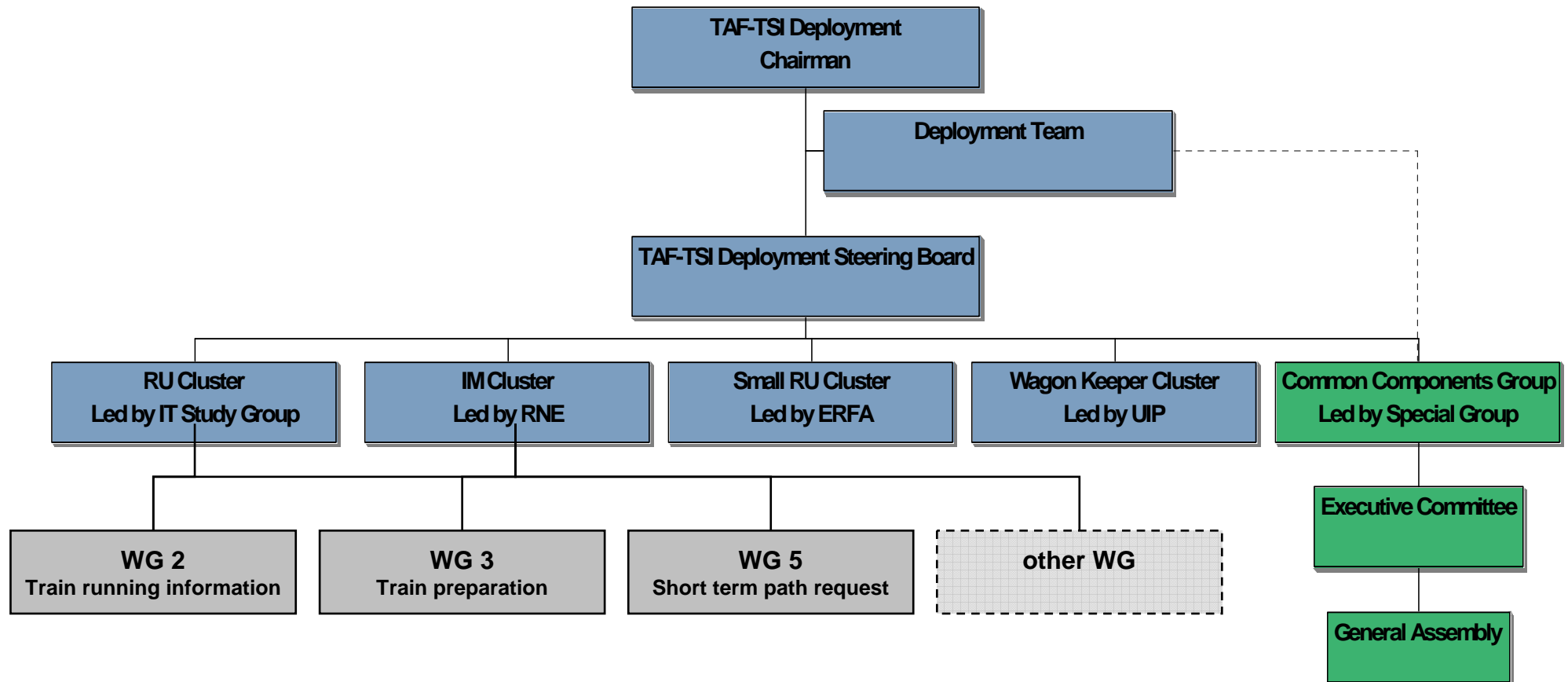


Overall SEDP (Strategic European Deployment Plan) Timeline for the Implementation

European Rail Freight Industry TAF TSI Strategic European Deployment Plan



TAF TSI Governance – Organisation including IM/RU WG (Working Groups)



The IM Cluster and the RU Cluster have defined, during joint TAF TSI IM/RU Cluster meetings, five different WG (Working Groups). The WG have to deal with IM and RU common matters.

WG 1: (Common Components) Deals with the Common Interface, the Reference Files and the Location and Company Identification.

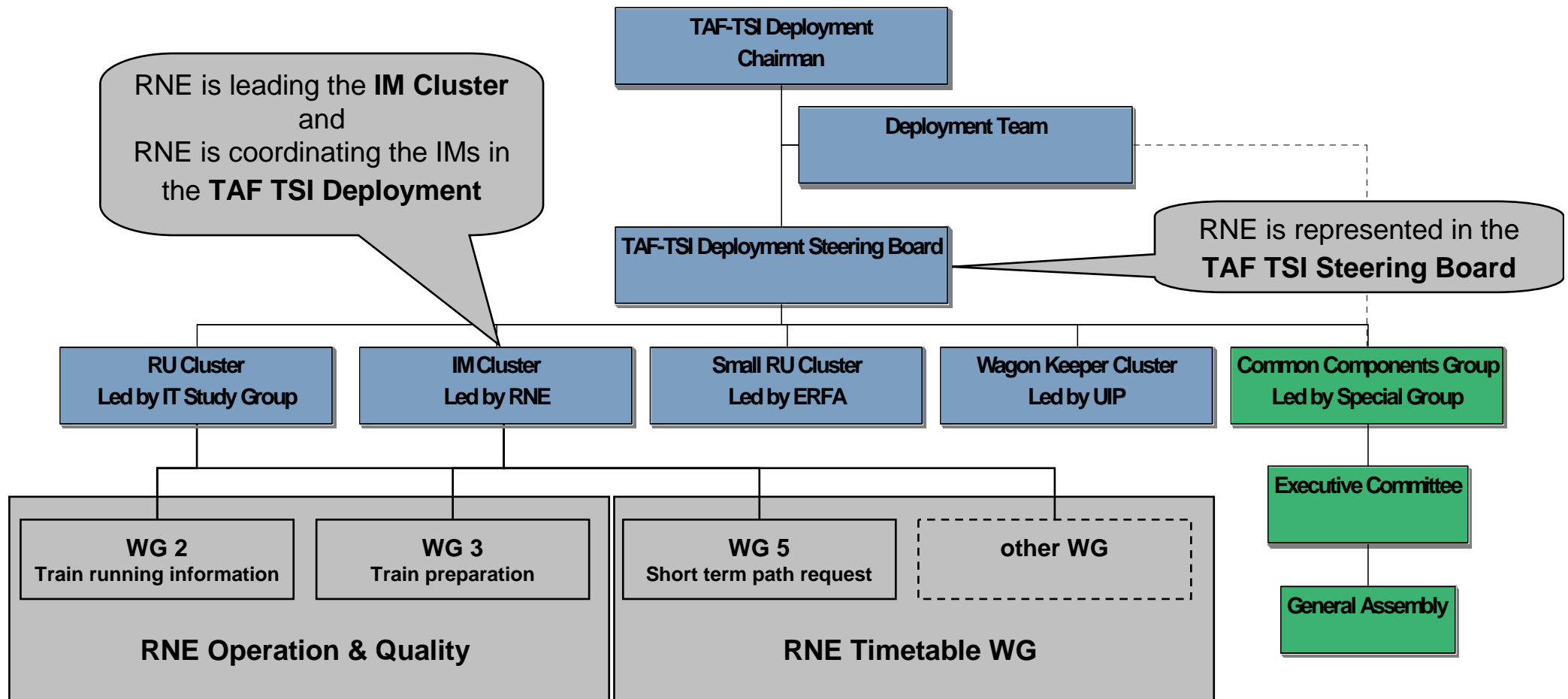
WG 2: (Train Running Forecast) Deals with Information Train running Forecast, Train Running Enquiries, Train Running Monitoring and Service Disruptions.

WG 3: (Train Preparation) Deals with Train ready and Train Composition..

WG 4: (Infrastructure Restriction DB) Deals with the Infrastructure Restriction.

WG 5: (Short Term Path Request) Deals with Short Term Path Request and Long Term Path Request.

TAF TSI Governance – IM Organisation/Coordination in the TAF TSI



Taking care of Customer Needs and European Regulations by developing IT systems



Customer Needs

(Results from the Customer Survey 2006/08 and known demand from RUs)

European Regulations

(TAF and TAP TSI and European directives)

Today's Business

(Existing Handbooks, Procedures and Tools supporting the business)

Operational Functions

Where is my train? When is my train at a defined point?
Is there any problem?

Timetabling Functions

Short term path request (Path request during the running TT) Infrastructure restrictions Database

Defining Procedures, Tools and Handbooks

(As a result of the Customer Needs, European Regulation and Today Business)

Developing IT Support

(Based on the Customer Needs, European Regulation and Today Business)

Taking care of Customer Needs and European Regulations by developing IT systems



Customer Needs

(Results from the Customer Survey 2006/08 and known demand from RUs)

European Regulations

(TAF and TAP TSI and European directives)

Today's Business

(Existing Handbooks, Procedures and Tools supporting the business)

“Excerpt” RNE IT Development Plan

(As a result from the Customer Needs, European Regulation and Today Business)

Projects	2008	2009	2010
TT: Connect national System - Pathfinder	█		
TT: Short Term Path Request		█	
Op: Europtirails European Rollout	█		
Op: Study for an “international” Train-ETA		█	
Op: TAF TSI Pilot for Train Running Info.	█		

Customer Demand

- Customers expect the procedures regarding international Timetabling and Operations to be set up in line with TAF TSI
- TAF TSI is a legal requirement to be fulfilled by **IMs** and their **customers**
- Develop IT solutions to support the business based on Customer Needs, European Regulation (TAF/TAP TSI) and Today Business

Activities

- RNE coordinates TAF TSI implementation for the IMs
- Together with customers, RNE defines procedures regarding international Timetabling and Operations taking into account TAF TSI requirements
- Additionally RNE takes care of customer requirements beyond TAF TSI

Thank you for your attention